

MOBIDERM®

medivex
HEALTHCARE LIMITED



Presenter: Sarah Gill



Established in 1847
Saint-Etienne - France

medivex
HEALTHCARE LIMITED

Established in 1986
Auckland – New Zealand



INTERNATIONAL
LYMPHOEDEMA
FRAMEWORK

Position document

BEST PRACTICE

FOR THE MANAGEMENT OF
LYMPHOEDEMA - 2ND EDITION

Compression Therapy:
A position document on
compression bandaging

International
Lymphoedema
Framework
= Mobiderm included

www.lympho.org

Belong  Together

What is MOBIDERM® ?



Composition:

Adhesive non-woven fabric
Open-Cell foam

medivex
HEALTHCARE LIMITED

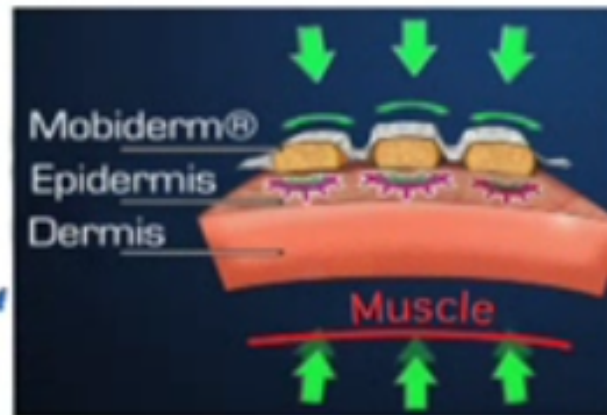


How does MOBIDERM[®] work?



+
EFFECTIVE

Treatment of oedema
optimised by mobilisation of
the subcutaneous tissues

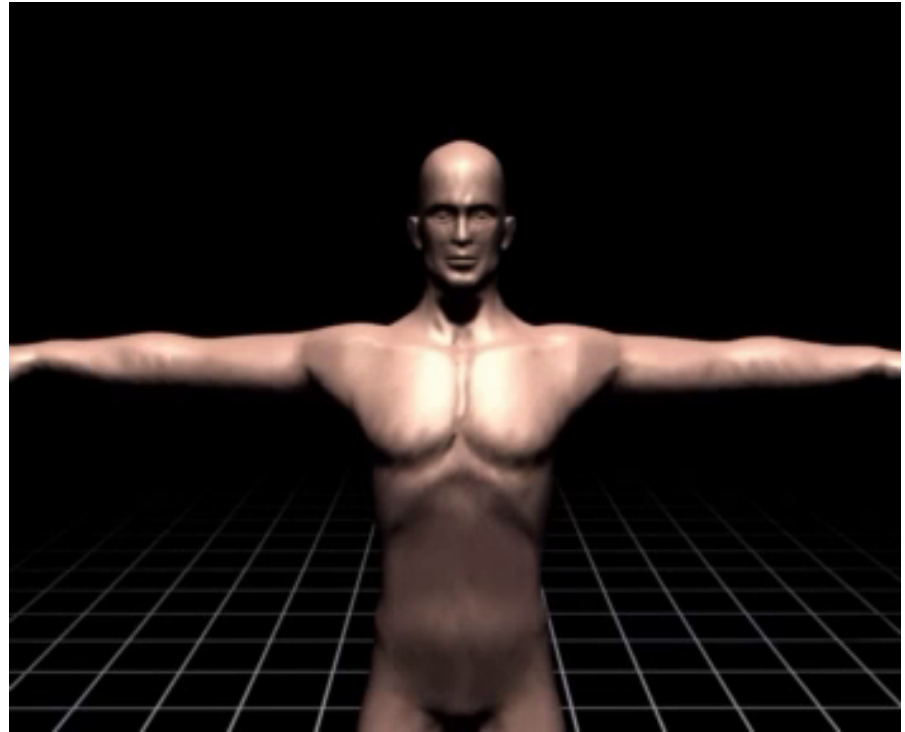


Creates a **pressure differential** between the supporting zone and the surrounding area.

Combined with muscle volume variation triggers a **shear effect** in the subcutaneous tissues.

Lymphatic system & MOBIDERM[®]

- 80% superficial
- Originates peripherally



How does MOBIDERM[®] work?



Why is MOBIDERM[®] unique?

Most products **compress = reduces** rate of filtration.

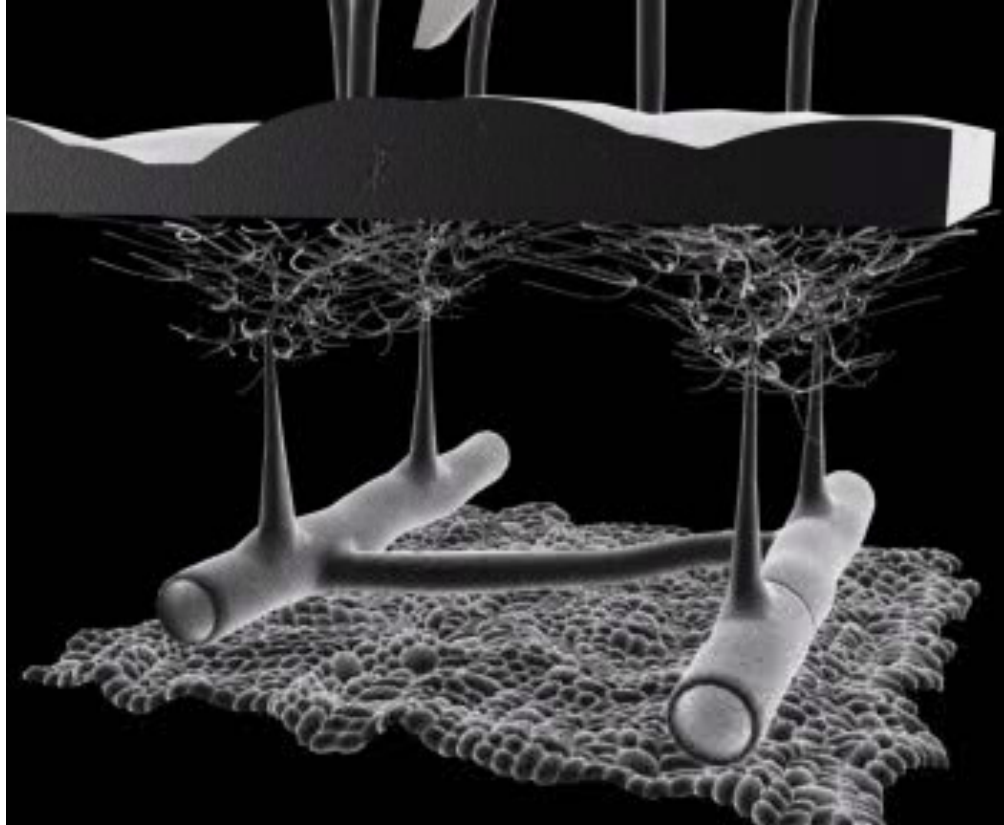
MOBIDERM[®] **stimulates** initial lymphatics

**Stimulating lymphatic system =
Increased of lymph load**

Reduces filtration

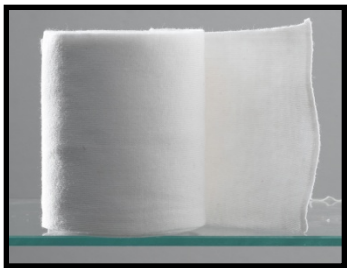
Stimulation = less rebound

MOBIDERM[®] and lymphatic load



4 bandages make up the system

1. Cotton bandage
2. Mobiderm
3. Flexideal short stretch
4. Biflex 16+ or 17+ medium stretch



1.

+



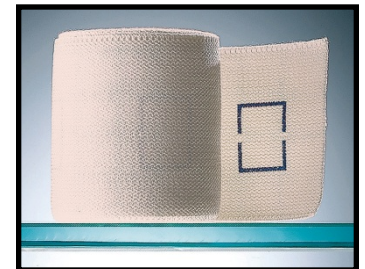
2.

+



3.

+



4.

Management stage



MOBIDERM autofit
Manchon standard - Standard armsleeve
TRAITEMENT DU LYMPHŒDÈME - TREATMENT OF LYMPHŒDEMA

Longueur de bras
arm length (A)
LONG: 47-50 cm
NORMAL: 43-45 cm

| Longueur de bras arm length (A) | Longueur de bras arm length (B) | Longueur de bras arm length (C) | Longueur de bras arm length (D) |
|------------------------------------|------------------------------------|------------------------------------|------------------------------------|
| 47-50 cm | 43-45 cm | 43-45 cm | 43-45 cm |
| 47-50 cm | 43-45 cm | 43-45 cm | 43-45 cm |
| 47-50 cm | 43-45 cm | 43-45 cm | 43-45 cm |
| 47-50 cm | 43-45 cm | 43-45 cm | 43-45 cm |
| 47-50 cm | 43-45 cm | 43-45 cm | 43-45 cm |
| 47-50 cm | 43-45 cm | 43-45 cm | 43-45 cm |
| 47-50 cm | 43-45 cm | 43-45 cm | 43-45 cm |
| 47-50 cm | 43-45 cm | 43-45 cm | 43-45 cm |
| 47-50 cm | 43-45 cm | 43-45 cm | 43-45 cm |
| 47-50 cm | 43-45 cm | 43-45 cm | 43-45 cm |

For orders and information
Please contact:
Medical Rehab Pty Ltd
Ph: 0413 311 397
Fax: 03 9681 8003
E: info@medicalrehab.com.au
W: www.mobiderm.com.au

Medical Rehab

THUASNE

THUASNE
120 rue Marquis Audin
CS 10032
92339 Levallois-Perret Cedex France
Commandes/Orders (E: France):
TEL: 04 77 81 40 42 (France)
TEL: +33 (0)4 77 81 40 42 (E: export)
www.thuasne.com



MOBIDERM autofit
Chaussette standard - Standard sock
TRAITEMENT DU LYMPHŒDÈME - TREATMENT OF LYMPHŒDEMA

(D) Hauteur entre le sol
et le genou (mesure
prise en dessous du pli
du genou face arrière)
Risque de blessure longue
(Measurement taken
below the bend of the
knee, back side)

| Hauteur entre le sol et le genou (mesure prise en dessous du pli du genou face arrière) | Hauteur entre le sol et le genou (mesure prise en dessous du pli du genou face arrière) | Hauteur entre le sol et le genou (mesure prise en dessous du pli du genou face arrière) |
|--|--|--|
| 43-45 cm | 43-45 cm | 43-45 cm |
| 43-45 cm | 43-45 cm | 43-45 cm |
| 43-45 cm | 43-45 cm | 43-45 cm |
| 43-45 cm | 43-45 cm | 43-45 cm |
| 43-45 cm | 43-45 cm | 43-45 cm |
| 43-45 cm | 43-45 cm | 43-45 cm |
| 43-45 cm | 43-45 cm | 43-45 cm |
| 43-45 cm | 43-45 cm | 43-45 cm |
| 43-45 cm | 43-45 cm | 43-45 cm |
| 43-45 cm | 43-45 cm | 43-45 cm |

| Longueur / arm length | Longueur / arm length |
|-----------------------|-----------------------|
| 44-46 cm | 44-46 cm |
| 44-46 cm | 44-46 cm |
| 44-46 cm | 44-46 cm |
| 44-46 cm | 44-46 cm |
| 44-46 cm | 44-46 cm |
| 44-46 cm | 44-46 cm |
| 44-46 cm | 44-46 cm |
| 44-46 cm | 44-46 cm |
| 44-46 cm | 44-46 cm |
| 44-46 cm | 44-46 cm |

For orders and information
Please contact:
Medical Rehab Pty Ltd
Ph: 0413 311 397
Fax: 03 9681 8003
E: info@medicalrehab.com.au
W: www.mobiderm.com.au

Medical Rehab

THUASNE

THUASNE
120 rue Marquis Audin
CS 10032
92339 Levallois-Perret Cedex France
Commandes/Orders (E: France):
TEL: 04 77 81 40 42 (France)
TEL: +33 (0)4 77 81 40 42 (E: export)
www.thuasne.com



MOBIDERM autofit
Bas-culotte standard - Standard High-high stocking
TRAITEMENT DU LYMPHŒDÈME - TREATMENT OF LYMPHŒDEMA

(D) Hauteur de culotte
(au pli de la jambe)
Fly-to-high height
jacking-up leg

| Hauteur de culotte (au pli de la jambe) | Hauteur de culotte (au pli de la jambe) | Hauteur de culotte (au pli de la jambe) |
|---|---|---|
| 43-45 cm | 43-45 cm | 43-45 cm |
| 43-45 cm | 43-45 cm | 43-45 cm |
| 43-45 cm | 43-45 cm | 43-45 cm |
| 43-45 cm | 43-45 cm | 43-45 cm |
| 43-45 cm | 43-45 cm | 43-45 cm |
| 43-45 cm | 43-45 cm | 43-45 cm |
| 43-45 cm | 43-45 cm | 43-45 cm |
| 43-45 cm | 43-45 cm | 43-45 cm |
| 43-45 cm | 43-45 cm | 43-45 cm |
| 43-45 cm | 43-45 cm | 43-45 cm |

| Longueur / arm length | Longueur / arm length |
|-----------------------|-----------------------|
| 82-87 cm | 82-87 cm |
| 82-87 cm | 82-87 cm |
| 82-87 cm | 82-87 cm |
| 82-87 cm | 82-87 cm |
| 82-87 cm | 82-87 cm |
| 82-87 cm | 82-87 cm |
| 82-87 cm | 82-87 cm |
| 82-87 cm | 82-87 cm |
| 82-87 cm | 82-87 cm |
| 82-87 cm | 82-87 cm |

For orders and information
Please contact:
Medical Rehab Pty Ltd
Ph: 0413 311 397
Fax: 03 9681 8003
E: info@medicalrehab.com.au
W: www.mobiderm.com.au

Medical Rehab

THUASNE

THUASNE
120 rue Marquis Audin
CS 10032
92339 Levallois-Perret Cedex France
Commandes/Orders (E: France):
TEL: 04 77 81 40 42 (France)
TEL: +33 (0)4 77 81 40 42 (E: export)
www.thuasne.com

Complete Care



Mobiderm bandage protocol (above)



Mobiderm garments for maintenance (left)

Images courtesy of M. Chardon-Bras, Thuasne

Treatment & Results



Week 1 (above & below)



Week 9 (above & below)



Conclusion

- 1.** Mobiderm® bandaging and garments aid in reduction of lymphoedema and are especially adaptable to patients requiring complex or palliative care.
- 2.** Ease of bandaging enabled district nurses and family to become involved in treatment.
- 3.** The introduction of Mobiderm® sleeve resulted in comfort and self management of condition.

Mobiderm® and its use in assisting with surgical intervention



Above: October 2013 – Mrs T – Durban – South Africa

Above: Post 2 weeks bandaging significant reduction and softening allowing debulking to take place.

Mobiderm® and its use in assisting with surgical intervention



Above: October 2013



Above: November 2016

Integrating **community based care** into treatment of **complex lymphoedema** utilising **Mobiderm®** bandages and garments

Presentation of patient

- 47 year old female
- Cerebral Palsy
- Macular degeneration
- Slight Intellectual disability
- Wheel chair bound
- Repeated episodes of cellulitis
- Fully dependant/hoisted
- Lost of the medical grid

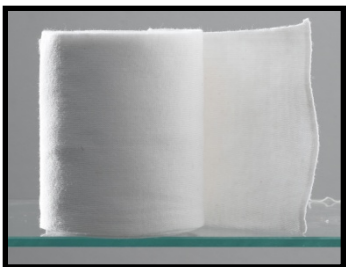


Left foot/toes



Left leg anterior view

Equipment:



1. Cotton

+



2. Mobiderm

+



3. Flexideal (night-time)

Integrating **community based care** into treatment of **complex lymphoedema** utilising **Mobiderm®** bandages and garments

Percentage of reduction in left lower leg

| | |
|-----------|-----|
| Ankle | 33% |
| Measure 2 | 8% |
| Measure 3 | 18% |
| Measure 4 | 20% |
| Measure 5 | 15% |
| Measure 6 | 15% |
| Knee | 21% |



Left: Bandaged leg in spiral with flexideal



Reduction in volume in 6 months 2604.61 ml

MOBIDERM®

Works by:

1. Stimulating the lymphatic vessels to remove lymphatic load,
2. Reduces rebound by activating the initial lymphatic vessels,
3. Reduces filtration,
4. Softens fibrosis.

Benefits:

1. Easy to use,
2. Highly adaptable,
3. Faster reduction,
4. Easier for the patient to move – lighter to wear,
5. Re-Usable,
6. Less is more effect,
7. Patient autonomy (easier to self bandage),
8. Cost effective.

Thankyou & Questions?

MOBIDERM[®]

medivex
HEALTHCARE LIMITED

